

2015 Annual Report

Ronald McDonald House Charities® of Alabama



— *Helping our families find* —
STRENGTH IN NUMBERS



Board of Directors

Rick Hanna, Jr. - President

Partner Owner/Operator, RPH Management Inc. dba McDonald's Restaurants

Keri Till Massey - Vice President

Securities Principal (PSJ), The Agents' Marketing Group, Inc.

Randy Nichols - Secretary

Senior Partner, Massey, Stotser & Nichols, P.C.

Bob Crawford - Assistant Secretary

President, United-Johnson Brothers of Alabama, LLC.

Jason Black
Owner/Operator, CLP Corporation, McDonald's

Mary Ellen Clark
Community Leader

Jordon DeMoss
Senior Associate Vice President, UAB Hospital

Javier Hernandez
Chief Risk Officer, BBVA Compass Bank

Corey Hobbs
Manager, MRO, Honda Manufacturing of Alabama

Tammie Howard
Media Director, Angels Advertising

Ashley Kaple
Owner/Operator, AKS Group, LLC, McDonald's

Jeff Logan
Owner, The Birmingham Barons

Lori Moler
VP of Customer Service, Children's of Alabama

Santiago Negre
Owner/Operator, SJN McDonald's

Cheryl Oswalt
Shareholder, Sirote & Permutt, LLC.

Andy Peters
Retired, Wynfrey Hotel

Eva Robertson
VP of Investor Relations, Protective Life Corporation

Wil Puckett - Treasurer

Birmingham Market President, Renasant Bank

Frederic Smith, Jr. - Immediate Past-President

Partner, Bradley Arant Boult Cummings, LLP.

Katherine Estes Billmeier

Chief Executive Officer

Max Cooper - Co-Founder

In Memoriam, 1916-2015

Robert Sargent
Regional Director of Business Development, Element Funding

Connie Stein
Secretary/Treasurer, Brothers Recycling

Traci Swann
Nurse Manager, Pediatric Unit, DCH Medical Center

L. Dale Thornton, Jr.
President/Owner, Thornton & Associates, Inc, McDonald's

Jeff Sweat
Account Executive, CBS 42

Marianne Sharbel, Co-Founder
Honorary Member

Mission

Ronald McDonald House Charities® of Alabama is committed to enhancing the lives of children and their families, with a primary emphasis on facilitating access to pediatric health care for residents of Alabama and adjacent states.

Advisory Council

Ronald McDonald House Charities of Alabama is proud to introduce its Advisory Council. The members of this council are not only dedicated supporters of the Ronald McDonald House, but also support various programs throughout the Birmingham region that strengthen the community and positively impact the areas of health, education and the arts.

The Advisory Council's dedication to the mission of the RMHCA is evident through their continued financial support as well as through their history of volunteerism and commitment as past board directors of the Ronald McDonald House. Several of these individuals were founding board directors and have been advocates of RMHCA since 1979.

Members

Kathy Baggio, *Past Board President*

Eleanor Barnes

Jim Black

Bebe Bugg

Dr. Robert Castleberry

Charlie Collat

Memily Colvin, *Past Board President*

D Franklin, III, *Past Board President*

JoAnn Gaede

Sims Garrison

Leisha Harris

Jimmy Holloway

Debbie Kiker

David Kimerling

Sarah Jane Knott

Alan Lott, *Past Board President*

Patricia Pritchett, *Past Board President*

Rick Roth

Mickey Rubenstein

Todd Sharley

Ernest Stevens, *Past Board President*

Larry Thornton

Ben Weil

Amanda Wilson, *Past Board President*

Doris Haver Wilson

Mission Partner

Ronald McDonald House Charities® has been McDonald's® charity of choice since 1974. Our McDonald's support is strengthened through vendors, volunteers, Donation Boxes at the restaurants and support of events.

Five of our 2015 board members, one of our junior board members and two of our Advisory Council members are McDonald's owner/operators.



i'm lovin' it®



Staff

Katherine Estes Billmeier

Chief Executive Officer

Erin Bowman

Operations Specialist

April Dickerson

Director of Family Programming

Chris Ellis

Director of Operations

Mary Claire Hunter

Development Coordinator

Stephanie Langford

Marketing & Communications Director

Alma Moore

Volunteer Coordinator

Kathy Robson

Director of Development

Laurie Smith

Communications Coordinator

Lisa VanZandt

Business Coordinator

Emily Wright

Special Events Manager

Family Care Specialist

Mary Crooks

Suzie Dee

Yarlleina Hardy

Runda Heard

Ann Jackson

Stephen Lake

Patsy McCall

Jonathan Patrick

Cynthia Thompson

Kathy Willis

Maintenance

Abraham Austin

Teamwork. As I reflect over the last year here at RMHCA, I am struck by the myriad of folks who have come together in support of our mission. Together we are the team who enables families to stay together and heal. Within the collective team, there are also many smaller teams that make our mission happen.



Teams come together to volunteer at events, to run in our Red Shoe Run, and to serve nightly dinners for our families. Our team of donors provides the much needed annual funding so that we can house our families and provide the best service possible for them. Our Board of Directors team gathers five times a year to ratify the work of volunteer committees and make sure our mission stays on target. Our staff team supports our families daily through our varied family programming, maintaining the House and Family Room and raising the funds necessary to operate our Programs.

Thanks to these team efforts, our family programming has grown significantly. Our team partners at Children's of Alabama helped us kick off our L.I.F.E program. L.I.F.E. is an acronym for learn, integrate, function and engage. It is a series of educational sessions on topics ranging from healthy eating to dealing with grief, where experts meet with our families in residence to enable them to thrive once they are back at home. We have also teamed up with other area non-profits to further benefit our families through equine and pet therapies.

It is always humbling for me to witness the continued generosity of these teams, whose support keeps our mission in action. I invite you to stay connected as a valued team member in our efforts through both your time and treasure. Follow us on Facebook, Twitter, Instagram—whatever your social media outlet of choice may be. Better yet, join our team here at the House and volunteer! And, of course, we always welcome your financial gifts, big and small. As a member of our team, I promise you will always be inspired by the hope that resonates at RMHCA.

Cheers,

A handwritten signature in black ink, appearing to read 'Katherine'.

Katherine Estes Billmeier
Chief Director Officer

Ronald McDonald House

Our Ronald McDonald House provides a supportive home away from home for families and their children who are receiving medical treatment at Children's of Alabama, UAB, or other area hospitals. We provide guest families with all the comforts of home – plus a local support network – so they can focus on their child's healing.

Without our House, families might have to sleep in the hospital lobby, a child's hospital room or even in their cars, as most families cannot afford a hotel for weeks or months – especially under the financial stress of mounting medical bills.

Birmingham's only affordable temporary housing facility for sick children and their families, the doors of our House are open twenty-four hours a day, 365 days each year, to welcome families of sick or injured children.

Staying close allows parents to better communicate with their child's medical team and provides adherence to complicated treatment plans.

Celebrating 36 years in 2015, our House has welcomed an estimated 37,000 families since we opened in 1979.



Ronald McDonald Family Room

Our Ronald McDonald Family Room at DCH Regional Medical Center in Tuscaloosa provides an oasis of calm for families, while increasing their ability to advocate for their child. They can find comfort, care and support without leaving their child's side.



Our family room is steps away from the NICU and provides families with a healing respite from the beeping machines and stress of the hospital environment. Amenities include laundry facilities, computer with free WiFi, comfortable chairs, flat screen television along with a library of DVDs and a fun playroom for siblings.

Brody's Journey

Footsteps Away from My Baby

If you would have told me a year ago that our family would have an extended stay at the Ronald McDonald House in downtown Birmingham, AL, I would not have believed you.

A year ago, I wasn't even 100% sure what RMHC was or what services they offered. Now I do.

In the early hours of May 8, 2015 my life changed forever. I went into labor at 36 weeks with my third child, Brody. Anxious and excited, my husband, Jason, and I loaded the car and headed to the hospital.



After several hours of waiting, my doctor arrived and I knew we would be meeting our son very soon. We were told at birth that Brody had a birth defect that would need immediate attention and he was swept off to the NICU at Huntsville Hospital. We learned more about Brody's condition and the type of surgery he would require while I was in recovery. Since our son had this certain birth defect, doctors decided to run additional tests to ensure nothing else was wrong. My husband and I had no clue that what once was a happy and exciting occasion would soon become a time of fear and unknowns.

As we relaxed in our hospital room and began contacting family and friends regarding Brody's birth, our pediatric cardiologist entered the room and said the words we will never forget: "There is something wrong with Brody's heart and he will need to be sent to Children's of Alabama in Birmingham."

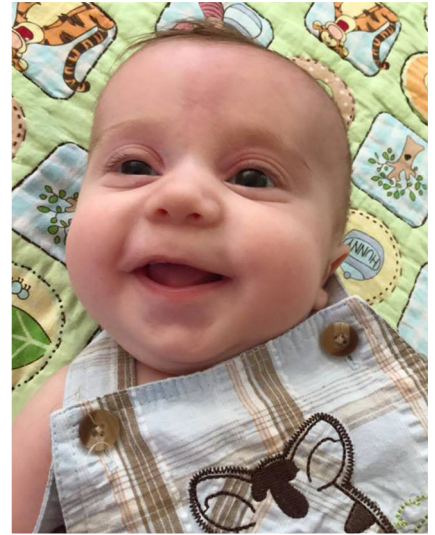


Brody was airlifted to Children's of Alabama from Huntsville Hospital on May 10, 2015. My husband and I were not far behind, but had to first go home to pack for a hospital stay that was indefinite at that point and to say goodbye to our other two children who we would be leaving behind to stay with my parents. We arrived at Children's unsure of just about everything. Brody spent his first night at Children's in the NICU. The following morning he would undergo his first of many surgeries. Since Jason and I moved from Birmingham to Huntsville in 2011, it still felt like home and we still had close friends and family who lived near.

Continue reading on next page

Jason decided it was best for me to stay with my aunt and uncle the first night as I was still recovering from a c-section. It was wonderful having family near, but near wasn't quite close enough when it came to my very sick baby. My aunt and uncle live in south Shelby county, so it took at least 30 minutes without traffic to get to the hospital from their home.

After his first night in the NICU, Brody was moved to the CVICU where we would wait for him to gain strength in order to be ready for open heart surgery. We learned that Brody has a rare congenital heart defect known as Shone's Complex.



His heart was working overtime to pump blood to the rest of his body due to a coarctation in his aorta. Our son was in heart failure and doctors were managing it with medication until it was time to operate. During this time of waiting, Jason stayed each night in the CVICU with Brody while I left each night to stay with my aunt and uncle.

We were on the waiting list for a room at the Ronald McDonald House and the wait seemed like an eternity each night I had to be torn away from my sick baby's bedside. The fear of losing your child is very real when you are in a situation like ours. I was most afraid that something would happen to Brody in my absence and I would miss that moment to say goodbye.

We received a call on a Sunday morning, a week after being admitted to Children's, that they had a room available for us at the Ronald McDonald House. The relief I felt that I would be footsteps away from my baby was almost unimaginable. Jason and I gathered our belongings and went to register and move in to our new home away from home during shift change that Sunday night. I had one of the best nights of sleep since giving birth to Brody that first night in our room. It was quiet, the bed was comfortable, and most of all I was able to be with my husband only steps away from our son.

On May 21, 2015 Brody underwent open heart surgery to replace his aorta. His open heart surgery was a success, and Brody was able to go home after a month spent at Children's of Alabama in the CVICU. Since then he has had 3 additional surgeries requiring up to week long stays. Our family is forever grateful for the services Ronald McDonald House Charities offers to families like ours.

The Ronald McDonald House gave us a comfortable place to rest at night in order to take better care of Brody during the day. We are thankful for the friendly staff at the Ronald McDonald House, the close proximity to Children's of Alabama, and the well taken care of facility that helped to meet our immediate needs during one of the toughest times in our life.

-Lacey Simpson, Brody's Mom
January 2016

House Statistics

In 2015, the **705** families served at our House were from
58 Counties in Alabama • **15** US States • **4** Countries

Top Counties Served

Mobile
Montgomery
Houston
Madison
Lee

Ethnicity

African American – 34%
Asian – 2%
Caucasian – 51%
Hispanic/Latino – 6%
Other – 7%

With a **97%** occupancy rate, we had an average of
12 families on the waiting list throughout the year.

Those **705** families who received love and support from RMHCA

Who were patients at
Children's of Alabama – 72%
UAB – 27%
Other – 1%

With family incomes of
<\$20,000 – 39%
\$20,000 - \$39,999 – 17%
\$40,000 - \$69,999 – 12%
\$70,000 - \$99,999 – 4%
\$100,000+ – 2%
Not Reported – 25%

Were treated for
Premature Birth
Heart
Brain/Neurological
Cancer
Stomach/GI Tract
(top 5 diagnoses)

Stayed an average of **19** nights with the longest stay being **297** nights.

Family Programming & Activities

Over the course of a family's stay at RMHCA, there are a number of family programs and activities scheduled in an effort to provide fun and enriching experiences. There are House Activities like game nights to provide a temporary relief of stress; personal development activities such as financial counseling; and support activities such as L.I.F.E. classes to enable our guests to better cope and manage during this difficult time.

L.I.F.E. (Learning-Integrate-Function-Engage) Program

The L.I.F.E Program is a joint effort between RMHCA and Children's of Alabama where healthcare professionals come to educate and support the parents and caregivers staying at the Ronald McDonald House. Each month expert speakers provide important information ranging from child development to accessing community and state resources. In 2015, our L.I.F.E. Program was awarded RMHC Global's Heart and Hands Award and a \$10,000 grant.

Hand in Paw

Twice monthly sessions at the Ronald McDonald House help to improve human health and well-being through animal-assisted therapy.

Crafts

A variety of craft nights hosted by volunteers help families focus on something other than medical treatments. During 2015, craft nights included no-sew blankets, special holiday crafts, "coloring" nights and more.

Ice Cream Socials

What could be more fun than an ice cream social with sundaes? Volunteer groups bring in all the toppings and set up for a 'make your own' ice cream party!

Pamper Sessions

Muse Salon and Winonah School of Cosmetology come to the Ronald McDonald House to provide hair cuts and other spa like treatments to help our families relax and put their worries aside for a moment.

Field Trips

Thanks to local attractions like Regions Field, the Birmingham Zoo, McWane Science Center, Vulcan Park and others who donate free entry, families staying at the Ronald McDonald House are able to experience Birmingham from places other than the hospital.

Game Nights

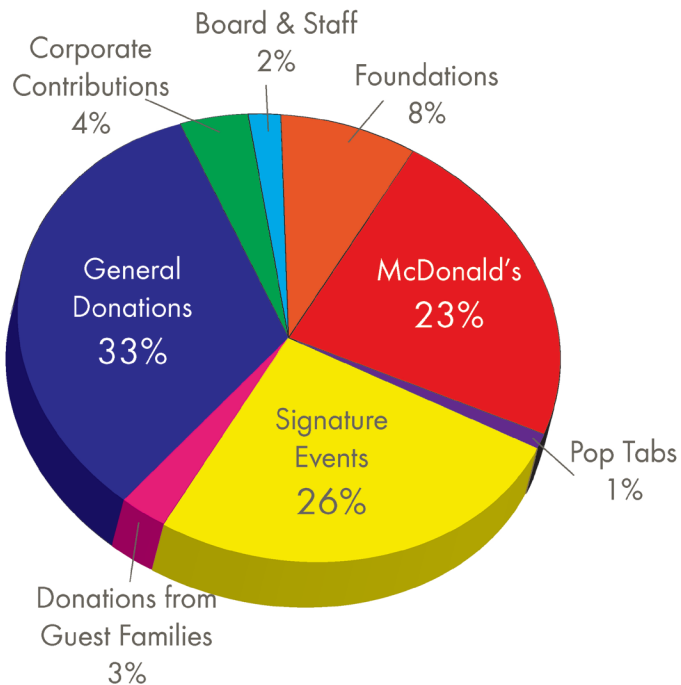
BINGO, Scrabble, Candyland and more are always fun and great for bonding of House guests – Game Nights provide opportunity for laughter and fun.



Financials

Ronald McDonald House Charities® of Alabama (RMHCA) is an independent IRS designated 501(c)(3) and is tasked with raising its own funds each year. Corporate partners, foundations and individual donors, along with multiple special events, enable the House to operate efficiently and effectively with an annual budget of \$1.7 million.

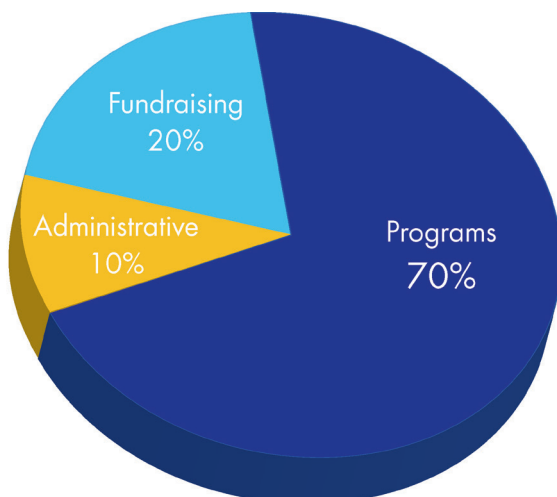
Sources of Revenue



RMHCA is a United Way of Central Alabama affiliate. **10%** of our 2015 Annual Budget came from United Way allocation donations. (This is shown in the 33% General Donations percentage.)

Guests at local McDonald's restaurants contributed over **\$199,000** through the RMHC Donation Boxes in 2015. (This is 13% of the 23% McDonald's percentage.)

Expenditures



RMHCA receives **\$0** in federal or state grants.

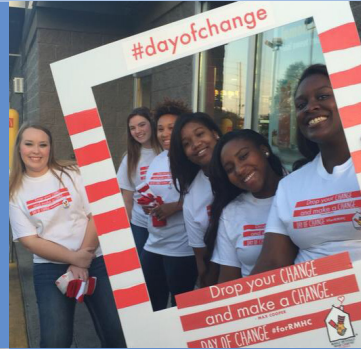
100% of the donations stay in Birmingham to support the families we serve throughout the state.

100% of donations made directly to RMHCA remain in our community.

Volunteers



4,571
Volunteers



448
Meals
Served



264
Volunteer
Groups



707
Event
Volunteers



With over **13,660** volunteer hours in 2015, Ronald McDonald House saved over **\$315,135.***
*based off \$23.07 volunteer hourly rate

Our volunteers are the Heart of our House. Each day you will find volunteers who are helping out around our house whether it's supporting our guest services, preparing a meal, or organizing our pantry. Ronald McDonald House Charities of Alabama welcomes a variety of groups to help maintain our large House and help make it feel like home for our guest families. Groups can help in many different ways including coming to the House on a scheduled date to help clean, holding a wish list drive to help stock the pantry at the House, hosting Family Activities and more! Smaller groups of 10 people or less can provide a meal for our families, prepare baked goods, or host an ice cream social. We are so thankful for all of the volunteers and all of the hours that were put in during 2015 – each individual and group made a huge difference for RMHCA!



Max Cooper Society

As we processed and reflected on the passing of Max Cooper in 2015, we cannot help but think of the impact he had on over 37,000 families who called Ronald McDonald House Charities of Alabama home over the 36 years since the House's founding. As co-founder of the fifth Ronald McDonald House in the world, Max was instrumental in bringing the charity to Birmingham.

His contributions will continue to make a difference for many years to come. It is because of Max's donations that both the first House built in Birmingham and the second opened debt-free, the first (and second) to do so within the global organization. Because of his help and love for children and their families our House is truly "the house that love built."

During Max's 99 years, he touched many lives. He worked for McDonald's for over 55 years, but was known for saying he "never worked a day in his life." He did not consider what he did work because he loved it!

Some refer to him as the "godfather of the Ronald McDonald House" here in Birmingham. There was never a time when he didn't ask if there was anything any of our families needed, and what specifically he could do for them. He always had a smile and a sparkle in his eye.

The Max Cooper Society was founded to honor Ronald McDonald House Charities of Alabama's late co-founder, Max Cooper. The Max Cooper Society is an annual leadership giving society for individuals who become a member by contributing at least \$2,500 annually to the Ronald McDonald House Charities of Alabama.



Members

Katherine Estes Billmeier
Charlie & Bebe Bugg
Dr. Robert & Becky Castleberry
Tom & Mary Ellen Clark
Dr. Mitch & Morissa Cohen
Bob & Jill Crawford
Jordan & Lauren DeMoss
Sam & Melody DiPiazza
D & Cile Franklin

Sims & Alicia Garrison
Rick & Mary Ellen Hanna
Javier & Diana Hernandez
Jeff & Katrina Logan
Lori Moler
Santiago Negre
Randy & Darby Nichols
Whitney & Cheryl Oswalt
Andy & Ruth Ann Peters
Wil & Aimee Puckett
James & Eva Robertson

Jeff & Kathy Robson
Rick & Kit Roth
Bob Sargent
Paul & Marianne Sharbel
Todd & Tempie Sharley
Frederic & Jennifer Smith
Jason & Connie Stein
Jeff & Mandy Sweatt
Michael & Christine Velezis
Edward & Amanda Wilson

Adopt-a-Family

By adopting a family, you can help ensure that families receiving treatment at local hospitals still have a place to call “home.” RMHCA receives **\$0** in federal or state grants. **100%** of the donations stay in Birmingham to support the families we serve throughout the state. **100%** of donations made directly to RMHCA remain in our community.

The actual cost associated with housing and support services provided by the House is more than **\$95** a night. We ask families to help defray these expenses by making a donation of at least **\$10/night**.

However, fewer than half of the families served are able to make any contribution at all. Therefore, the Adopt-a-Family program helps to fill the funding gap and keep the facility operating at full capacity.

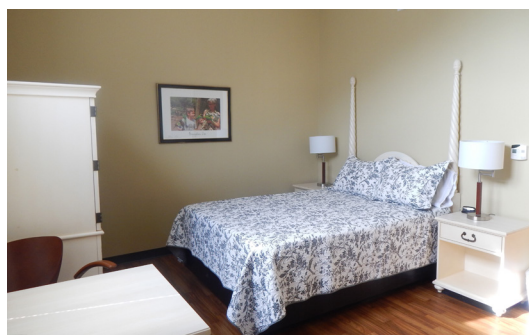
By adopting one or more of our guest families, your generosity will help provide the love and support they need to get through a difficult time.



Adopt-a-Room

Adopt-a-Room at Ronald McDonald House Charities of Alabama and know that you are providing children with an uplifting place where they can recover after painful surgeries and treatments at the hospital. Your generosity can give them a home away from home where they can be surrounded by their family and their favorite toys. You can help families through their challenging days by allowing them to get a good night’s rest and to relax without constant interruptions from nurses and doctors.

When you sponsor a guest room, you are helping us provide families with much more than a roof over their heads. You are helping maintain freshly appointed rooms where families find relief from their stressful situations, a sense of normalcy, and the opportunity for families to find each other and create their own supportive network.



If you are interested in learning more about this type of giving, please contact Kathy Robson at 205-638-7258.

Junior Board

The Ronald McDonald House Charities of Alabama Junior Board's mission is to recruit elite young professionals in the Birmingham area to raise money and awareness for the Ronald McDonald House and its mission. The board offers young professionals a chance to build leadership skills, establish relationships with other young professionals and the opportunity to give back to the community through volunteer and fundraising opportunities.

Hosting three fundraising events over the course of the year, the Junior Board raised **\$29,853** for the Ronald McDonald House. In 2015, the Junior Board hosted its 7th Annual Red Stiletto Party, the 2nd Annual Red Trunk Riot and a inaugural event: Sweet Home Brews!

The Junior Board works hard to raise money for RMHCA, and they work even harder to help give our families a home away from home. Cooking a dinner every quarter, the Junior Board also hosts many fun activities for the families, including the annual Holiday Party in December. They partner with the Student Leadership Council to provide the families with an amazing holiday experience complete with a special visit from Santa Claus. We are grateful to have such a dedicated group of people on the Junior Board and appreciate all that they do for the families staying at the House. Because of their passion for our mission, families staying at the House have something special to look forward to when coming home after a long day at the hospital.



Members

Philip Arthurs
Will Bryant
Aaron Casteel
Nicole Caston
Chad Crowson
Jayna Goedecke
Adrienne Gunselman

Tiffany Hill
Marianna Hyland
Dnika Joseph
Meagan Kiker
Patrick McCarroll
Cole McClenney
Erica Murphy

Cliff Nail
James Negre
Amy Owens
Nick Walter
Tera Webb
Terri Young

Student Leadership Council

Our Student Leadership Council is a group of high school juniors and seniors committed to promoting volunteerism while serving the families residing at the Ronald McDonald House.

This group volunteers and raises money with their main focus on building awareness of our mission. They host an annual Open House in the Fall to invite the community to come and learn more about what we do and how to get involved. Their signature event is Bowl-a-palooza which raised over \$5,000 in 2015 and was a lot of fun.

Members volunteer at the House and at our events. They all have giving hearts and work hard to balance high school classes along with multiple extra-curricular activities. We are thankful to have these young adults come together from multiple schools to represent our House in the Birmingham community.

Members

Maya Baker
Devin Blackburn
Melissa Dennis
Divya Desai
Jocelyn Dillard
Lydia Goodwin

Abigail Greer
Maria Kolettis
Kenzie Lambert
Natalie Lett
Elizabeth Lindsey
Michael Liptrot
Briana Morris

Amanda Paramore
Kelby Roth
Johnny Schaffers
Mary Glynn Scharf
David Sides
Katie Sullivan



Get Involved

Fundraisers

Companies, organizations and individuals come together to raise funds on behalf of Ronald McDonald House Charities of Alabama. These third-party events such as Elevate the Stage, Color Me Rad 5K, and Alabama Splash Adventure bring in thousands of dollars which directly affect our ability to provide housing for the families we serve.

In 2015, over **\$94,900** was raised from these third-party fundraisers alone.



If you are interested in learning more about this type of giving, please contact Stephanie Langford at 205-638-7261.

Legacy Giving

Planned giving is finding ways to make charitable gifts now or after your lifetime while enjoying financial benefits for yourself. Legacy gifts are sometimes referred to as “stop-and-think” gifts because they require some planning and, often, help from your professional advisors. Unlike cash donations, they are typically made from assets in your estate rather than from disposable income, and come to fruition upon your death. A misconception is that planned giving is only for the “wealthy.” The truth is, even people of modest means can make a difference through planned giving.

If you are interested in learning more about this type of giving, please contact Kathy Robson at 205-638-7258.

Pop Tabs

In 2015, millions of pop tabs were collected and donated to the House. Brother's Recycling is RMHCA's official Pop Tab Collector and provides nearly double the going rate for recycled aluminum. This company picks up the pop tabs from the House, processes them and sends the House a check each month.

We earned **\$15,841** in 2015 from recycled pop tabs.



Leader Donors

ADPi-Samford
BBVA Compass Bank
Brothers Recycling Company, Inc.
The Caring Foundation BCBS
Community Foundation of Greater Birmingham
Dillards, Inc.
EBSCO Industries, Inc.
Edward A. & Catherine L. Lozick Foundation
Junior Board of RMHCA
McDonald's B'ham Co-op
McWane, Inc.
Medical Properties Trust

Mid South Baking Co.
Protective Life Corporation
Ronald McDonald House Charities, Inc.
Regions Bank
Run For Joy
Ste Michelle Wine Estates
Tanner Colby Smith Foundation
UAB Benevolent Fund
UAB Medicine
United Johnson Brothers
United Way of Central Alabama
Wells Fargo

Major Donors

Jim & Cathy Black
Jack Darnall
Denson Nauls Franklin III
David & Michelle McAllister
Lori Moler
Conrad Quint
Jason & Connie Stein
Rick & Linda Walter
ACIPCO
Alabama Splash Adventure
Altec Industries
Baker, Donelson
Barker Advertising
Boeing Employees Community Fund
Bradley Arant, LLP
Children's of Alabama
Coca-Cola Company Atlanta
Color Me Rad, YOP Enterprises LLC.
Community Health Charities of Alabama
Dr. Pepper
Gadsden Elks Lodge 1314
Geocent, LLC
HealthSouth Corporation

Hudson Company
IBM Employee Charitable Contribution Campaign
Jay L. Smith Family Foundation
Elevate the Stage
La Z Boy Furniture Galleries
Loomis
Martin-Brower Company
Mayer Electric Supply Company
Maynard Cooper & Gale P.C
McCatur, Inc
McDonald's USA, LLC.
Robert R. Meyer Foundation
Modern Technology Solutions, Inc.
Nick's Kids Foundation
Nucor Steel Tuscaloosa, Inc.
Renasant Bank
RMHC of Central Alabama
RPH Management, Inc.
Sealy Outdoors-Big Bass Splash
SS Nesbitt
Vulcan Materials
WIAT TV CBS 42

Donors

Community Donors

Zander Abney
Gordon P. Ackley
Victor Adamo
Freeda Adams
Jo Marie Allsup
Mary Anderson
Misty Archer
Philip Arthurs
Landon Ash
Elaine Augustine
Brenda Austin
Kathy Baggio
Jerry Baine
Susan Baker
Vicki T. Bandstra
Bob Barker
Eleanor Barnes
Ruth Bartow
Gabriel Bassett
Margaret Z. Beard
Lauren Becker
Adam Been
Barbara Bell
Andy Bernstein
Julie Berry
Kimberly Bibb
Eboni J. Billingsley
Katherine Estes Billmeier
Shirley Birchfield
Phil Bird
McKinley Bishop
Harold & Nancy Blach
Jason & Wyspr Black
Joel Blackstock
Shirley Bodiford
June L. Bonner
Bob Boothe
Simon Bowen
Fred Bower
K T Bowles
Greg & Ashley Brandon
Marcie Paduda Braswell
Elna Brendel
Kayden Broten

Barry Brown
Cynthia Brown
Henry Tex Brown
Jessica Brown
Michael W. Brown
Ellen Bryant
George Buchanan III
Charlie & Bebe Bugg
Jessica Burnett
Jakhiry Burris
Sandra Burson
Reesa Byrd
Alice A. Byrne
Alejandro Cabrera
Matt & Amy Cahill
William Caine
Dylan Columbo and Amy Cannova
Linda Cantrell
Richard Carpenter
Aaron Casteel
Dr. Robert & Becky Castleberry
Nicole Caston
Theresa Chandler
Richard Chappell
Rhetonia Chisholm
Vincent Cirolì
Jacqueline Clark
Jerry Clark
Thomas & Mary Ellen Clark
Charles Clayton
Pat Clotfelter
Carl H. Coghill
Curtis W. Coleman
Bryan Combs
Linda G. Compton
Ralph Conover
John D. Cooke
Jimmy Cosmas
Bob & Jill Crawford
Jennifer R. Crowson
Tom Cubelic
Frank Cullen
Thomas Curlee
Nancy Dallas

Anita Dark
Brent Davenport
Austin Davis
Rob Davis
Dana Day
Jerry L. Dean
Susan Decoudres
Barry & Lorraine DeGonzague
Rob DeLong
Jordan & Lauren DeMoss
Eddie Denaburg
Charles H. Doss
Anthony Douglas
Arthur J. Doyle
Krista Drinkard
William Duke
Jessellan L. Dunn
John Durwood
Ron & Charlotte Dutton
Wanda Ehl
Christine Ellis
Frederick J. Elsas
James Emison
Sasha Epter
Buddy & Becky Estes
Jarrell & Sarah Estes
Carol Evans
Craig L. Eyer
Caroline Ezelle
Carley Ezzell
Janet Landefeld
Mark Feagin
Virginia G. Ferguson
Carol Fiedler
James Filler
Robert Finchum
Joyce Floyd
Leah Floyd
Mandy Frye
Henry Gaede
Jack Galassini
Kinley Galbreath
Joseph G. Gamble
Trina Gamiel

Jeanette Gary
 Kimball Geno
 Ara Geuvjehizian
 Lady Jane Gillespie
 Jayna Goedecke
 Susana Gonzalez
 Vincent A. Graham
 Mary Grahovac
 Myron Gregory
 David Grigsby
 Alva M. Grimsley
 Leah Grimsley
 Harold Grupe
 Adrienne Gunselman
 Bryan Hackett
 Amy Hall
 Beverly Hall
 Laslie Hall
 Susan Hall
 Rusty & Content Hamilton
 Joey Hand
 Clint Hardman
 Teresa Harrell
 Leisha Harris
 Richard Harris
 Xavier Harvell
 Jessica Hatch
 Joel Hausler
 Larry Hawkins
 Carter Haynes
 Paul E. Haynes
 Javier & Diana Hernandez
 Katie Hicks
 Bill Higgins
 Diane Hill
 Susan L. Hill
 Tiffany Hill
 Joshua Hinson
 Corey Hobbs
 William Hocutt
 John & Susan Hodges
 Cheri Hodson
 Christopher Holder
 Todd Holder
 Teresa Holland
 Albany R. Holmes

Kasey & Tammie Howard
 Rhonda Hughes
 Hayden Hulsey
 Samantha Ingram
 Jeff Inman
 Brent Irby
 William Jackson
 Joe Jacobs
 Robert Jasper
 Vail Jeavons
 Jack & Mary Johnson
 Kelly Johnson
 Barbara Jones
 Pamela Jones
 Karen Judd
 Amy Kabase
 Bene Kaplan
 Trevor & Ashley Kaple
 Nick Karos
 Bart & Mathea Kelley
 Chad & Catherine Kelly
 Jeff Kennedy
 Lori Kent
 Maaz Khawaji
 Meagan Kiker
 David & Mary Kimerling
 Christie King
 Lee Kinnebrew
 Tim Kirk
 Gerald Kolschowsky
 Tom Konantz
 Ludwig Krammer
 Tom Lamkin
 Richard & Alane Larimer
 Walt Larisey
 Gerald B. LaSuer
 Ashleigh Latham
 Reid Lawson
 Nik Layman
 Steve Lazarus
 Harold M. Lee
 Thomas Lee
 William Lee
 Kristen Lewis
 Debbie Lindley
 Colleen Lintz

River Lofton
 Jeff & Katrina Logan
 Naomi Logsdon
 Corine Longino
 John Lossie
 Blakely Loveless
 Clint Ludlam
 Dan Lyles
 Paisleigh Mack
 William MacLean
 Katie Malone
 Jean Markham
 Charles E. Mason
 Todd & Keri Massey
 Clark Matthews
 Timothy McCain
 Charles A. McCallum
 Cole McClenney
 Roma McClure
 Jack B. McCullough
 Marla McCully
 Jerry McKee
 Eileen B. Medow
 Frank Melazzo
 Yvonne Melei
 Nancy Messer
 Tammy Miles
 Jane Miller
 Winston S. Miller
 George Mitchell
 Regina Montgomery
 Alma Moore
 Jane Moore
 Raegan Morell
 Zach and Libby Morgan
 Candia Morris
 Liam Mosley
 Tom Moxley
 Jimmie Mullally
 Gisela Mullek
 Erica Murphy
 Mark Myatt
 Rebecca Myatt
 John B. Nabors
 Melinda Naderi
 Clifton Nail

Donors

George Neal
Jack Neal/Sirote & Permutt, P.C.
James Negre
Chris Newell
Michael L. Newman
Randall Nichols
Claude Nielsen
Amanda Norton
Charlie O'Quinn
Sara Oatridge
Bruce Olson
Whitney & Cheryl Oswalt
Larry Otts
Amy Owens
Rafael Palacios
Katie Panos
Jerry Parker
Melinda Parker
John Parnell
Edward Patterson
William M. Patterson
David Patton
Bob Payne
Marilyn Payne
Shirley Payne
Lucas Paz
Ron Perkins
Andy & Ruth Ann Peters
Gerald Pettway
Matthew Pfrommer
Richard H. Phillips
Michael Prewitt
Sarah Propper
W. D. Puckett
Wil & Aimee Puckett
Ben Rabidoux
Lisa Ramsey
Lawrence IV Randolph
Carolyn Respass
Charles F. Rhea
Laurie Rhodes
Claude H. Rich
Duane Ricketts
Richard Riddle
Jon Ridgeway
James & Eva Robertson

Mary Roebuck
Glenn Rogers
Robert Romanoff
Fred Roth
Rick & Kit Roth
Billy Rotton
Nancy Rowell
Bill Ryan
Bobby Ryan
Delores Ryan
Cecil Ryland
Sheldon Saitlin
Shannon Sampson
Katherine Sasser
James and Mary Beth Schaaf
Andrew Schmit
Bruce Schoonover
Cindi Seidel
Chuck Self
McDonalds USA
Recardo Serrano
Roberta Shapiro
Paul & Marianne Sharbel
Lisa Sharp
Lloyd Shelton
A. R. Shirley
Gordon A. Sibley
Rhonda Siegel
Brody Simpson
Brandon R. Smith
Frederic & Jennifer Smith
Judson Smith
Laurie E. Smith
Richard Smith
John Smyth
Jennifer Sneed
Betty Snoddy
Kathryn Sowerwine
James P. Sparrow
Matt & Marty Speare
Joe R. Sport
Charles Stein
David & Nancy Stein
Ernest T. Stevens
Bailey Stuckey
Larry Stump

Mark Styslinger
Jeff & Mandy Sweatt
Thomas C. Switzer
Ellie Taylor
Lisa Temple
Henry F. Thessen
Mike Thomas
Daniel Thompson
Lucille Thompson
Dale Thornton
Sandra Thornton
Dennis Thrasher
Sandra B. Thurmond
Greg L. Tinker
Hal Tolleson
George Townsend
Peggy Turner
Marrell Turvin
William Valentini
Ed Vaughn
Mike Vaughn
Charlotte Vercelli
Pamela Voss
Angelia Walker
Shirley Walker
Nick Walter
John Wandrisco
James 'Tripp' Warren
Robert Wason
Leonard Watson
Sherry Weaver
Jane Webb
Tera Webb
Brian Weber
Arlene Weinsier
Betty Wellborn
Tim Wenger
Justin Wesley
M. W. Wheeler
Dan White
Danny White
Gene White
John H. Willauer
Artavious & Patricia Williams
Jane F. Williams
Juanita Williams

Rachel K. Wiseheart	Cedar Ridge Excavating, LLC	Huntsville Woman's Club
Jan P. Wood	Chappelle Consulting Group	Hyde Engineering, Inc.
Rick Wood	Char, Inc.	Iberia Bank
William T. Wood	Children's Hospital Nurses	Ilovedestin.com
Cynthia D. Woods	CMC Steel Alabama	International Interior Design
Glorinda Woods	Community Health Charities of	Association/AL Chapter
Emily Wright	America	Jabbo, Inc.
Raylee Wright	Community Health Charities of the	Jack and Jill of America - Birmingham
Lawerence Wruble	Southeast	Chapter
Doug Wylie	Corner One	Jack Christopher Mathews Memorial,
Jonathan & Rebecca Young	Corporate America Credit Union	LLC., The
Terri Young	Crimson Contractors, Inc	Jack Marshall Foods, Inc.
ABC 33/40	Cross Business Forms, Inc.	James W. Woodruff Charitable Fund
Aberdeen Sessions, The	Daikin Applied	Jefferson County Farmers Federation
ADPi UNA	DAL Properties, LLC	Kendra Scott Design, Inc.
ADPi-Alabama	DCH Foundation, Inc	Keystone Foods LLC
ADPi-Montevallo	DCH Health System	Killen United Methodist Church
Alabama Bass Federation, Inc.	Dean Restaurants	Kohl's
Alabama Central Credit Union	Deck Foods, Inc.	Kristy Northcott Downer Bill Hudson
Alabama Federation of Women's	Delta Private Jets	Agency
Clubs	Department 56 Housing Authority	Lamar Companies
Alabama Independent Auto Dealer	Doug Lewis Dentistry	LDR Club
Asso. Inc.	Drummond Company, Inc.	Liberty Recycling
Alabama State Asso. Emblem Club	East Gardendale Baptist Church	LPL Financial
Allstate	Fairway Investments, LLC	Luna's Kitchen/Irondale Cafe
Allstate - Giving Campaign	Fall City Missionary Baptist Church	Macy's / Bloomingdale's
Alpha Kappa Alpha-Talladega	First Giving	Massey, Stotser & Nichols, P.C.
Amazon Smile	Floor Coverings International	McBride Elementary School
AmWINS Group, Inc.	Fravert Services	McDonald's Atlanta
AT&T Employee Giving United Way	Gamestop	McDonald's North AL Co-op
Campaign	GE Capital Corporation	McGriff, Seibels & Williams, Inc
BB&T	GFWC Huntsville Woman's Club	MendenFreiman LLP
Benevity Community Impact Fund	GlaxoSmithKline	Meredith's Miracles, Inc.
Beta Lambda CH of Delta Sigma PI	Golden Rays LLC	Mitchell School Fund
Bethel United Methodist Church	Gray Construction	Mitilda Jane
Bill Hudson & Associates, Inc.	Great American Insurance Co.	Morgan United Methodist Women
Birmingham Jewish Foundation	Greenway Health	National Christian Foundation of
Brasfield and Gorrie LLC	Gulf States Equipment Sales	Alabama
Brick and Tin LLC	H&K International	Network For Good
Bridgeworth Financial	Hackney Foundation, The	Newbern Union Sunday School
Buffalo Electric Company	Harmony Baptist Church	North Alabama Fabricating
Buffalo Rock	Haynes Downard, LLP.	Company
Calera Elementary School	Hearthside Cabin Rentals, LLC	Northpark Baptist Church
Cam South Sweeping Beauty	Highland Commercial Mortgage	Our Lady of Sorrows Catholic Church
Cap Trust	Honda Manufacturing of Alabama	P'zazz
Cedar Grove Baptist Church	Howard Church of Christ	Papertown Baptist Church

Donors

Paul D. and Janet C. Schrage
Charitable Fund
Peak Substation Services, LLC
PFT Service Inc
PNC Bank
Precision Grinding, Inc.
Presbytery of Sheppards and Lapsley
Pride of North Birmingham #319
Prime South Bank
ProAssurance
Q4 Digital Media
Quest Group
Railroad Park Foundation
Rescue United Methodist Church
RMHC of Greater Chattanooga
Rogue Tavern
S & D Coffee

Safe Guard Corporation
Sanctuary 25
Siemens Industry, Inc.
Sinclair Broadcast Group, Inc.
Sirote & Permutt, P.C.
Southern Company Alabama Power
Company
Spann Enterprises, Inc.
Sparkmon & Associates, CPAs, P.C.
Student Leadership Council
SunTrust Banks, Inc.
Taylor Sales & Service, Inc.
Ten D Enterprises, Inc.
The Surgery Center
Townsquare Live Events
Travelers Support Center
Trinity Medical Center

Truist
Truitt, Tingle & Paramore, LLC
Turner Foundation, The
UPS - United Parcel Service
USI Insurance
Veenschoten & Company, Inc.
Virginia College
Wal Mart # 05-9000
Warren Allan Resolute Products /
Coosa
Warren Averett Companies, LLC
Weil Brothers
Wells Fargo Community Support
Campaign
Williams Blackstock Architects
Women of the Moose
YourCause

Friend Donors

Grady Acevedo- Rosas
Jodi Adair
Sameul Aldewereld
Melisa Alexander
George Allen
Mitch Amick
Sue Anders
Jeffery Anderson
Kathy Anderson
Keith Andress
Ben H. Arkes
Connie Arnold
William Arnold
Stephen Ashworth
Wilma Austin
Norman Bailey
Jane Baird
Tom Ballou
Cathy Barker
William Barnes
Vernon Barnett
Richard A. Barrett
Phillip Baum
Jennafer Beach
Marilynn Beard
Betty Beckham
Elise Bedgood
Mary Behrends
Bertha Bell
Martha Benefield
Aaron Benford
Eloise Bice

John Billingsley
Jerome Birer-Lapidus
Carrie Black-Phillips
Sue Blackmon
Brenda Blake
Laurie Blazer
Mary Bledsoe
Patricia A. Block
Bert Bloomston
Patricia Bogan
Terry K. Bowdoin
Charolette Box
Zachary Bozeman
Chuck Bracknell
Sheryle Bracy
Becky Brazeel
Kimberly Brello
Melanie Bridges
Lanita Broadus
Abby Grace Brown
James Brown
Robbie Brown
Warren Brown
Caroline Bruce
Jason Bryant
Tony Bryant
Will Bryant
Sarah Buchanan
Brad Buck
Carmelita Budge
Kathryn Burns
Brian Butler

Christina Butler
Dean Butler
James Callaway
Belinda Campbell
Ronald Campbell
Elizabeth Campos
Joseph Canepari
Freda Cannon
Carrol Caples
Catherine Capps
Bryan Carr
Kerrie Carr
Salvatore Caruso
Paige Casey
Steven Casey
Stephen Castleberry
Neil Caudle
Jennifer Cazares-Ayala
Christopher Chandler
Lindsey Chitwood
Ronald Christman
Steven Chromey
Katherine Church
David Clark
Emma Grace Clark
Robbie Clark
Neely Clayton
Natalie Clements
Thomas Cleveland
Addison Clowers
Crescent Cobb

Irby M. Cohen
William Cole
Janet Collar
Susan Comensky
Barbara Comer
Ashley Condon
Dayna Cook-Heard
Dee Cooke
John Cooper
Melissa Cooper
Sheldon Copeland
Kolter Couch
Lori Coward
Norma Cowart
Valeri Cowart
Mary Creel
Charlie Crow
Chad Crowson
Chris Cruise
Stephen Cummings
Meredith Currie
Jack Dabbs
Jane S. Dale
Danny Daniel
Clarissa Daniels
Stacey Daugherty
Annie Davis
Melvin H. Davis
Rocky D. Davis
Angela Deaver
Melissa Dennis
Terry J. Denson

Jimmy Dial	Ronald Gray	Ann Jackson	Tommy Luna
Maise Diamond	Pam Green	John Jeffcoat	Tabatha Lutz
Emma & Eva Dickey	Bill Greenwald	Mavis Jenkins	Michael Lynch
Kendall Difatta	Jan Greer	Sarah Jenkins	Jack Lyster
Jocelyn Dillard	Suzie Greer	Emogene Johnson	Sonja Mack
Donnie Dobbins	Theda J. Griffith	Herbie Johnson	William J. Magnuson
Eugene Donaldson	Carolyn N. Grimes	Tiffany Johnson	Bryce Mann
Sandra Dossett	Gail M. Guice	Carolyn Jones	Kaval Mann
Sammy Doyle	Megan Gyauch	Ira Jones	Pat Martin
Lakeesha Duff	Darren Hall	Johnnie Jones	Cecile Mason
Jeanine Dumas	Jennifer M. Hall	Karen Jones	James and Karen Maynard
Eloise Duncan	Ella Ham	Michael G. Jones	Alexia Mays
Casey Dunn	Jenna Hancock	Sharon Jones	Patricia McCain
Simone Durand	Darryl Hardie	Tomias Jones	Kimberly McCall
Catie Duskin	Angela and Hoyt Hardwick	Dnika Joseph	Patrick McCarroll
Pamela Dyson	Debroah Harper	Susan Justice	Sue F. McCarter
Mallie Easterlin	Jordan Harper	Melinda Kayton	Carolyn McClure
Robert Eatman	Allyson Harris	J.M. Keegan	Norman McClure
Ruth Edgar	Linda Harris	Susan Keith	David McConnell
Charles Ellis	Henry P. Harrison	Tiffin S. King	Zelma M. McDaniel
Louise Elmore	Timothy Harrod-Davis	Rufus Kinney	Hannah McDonald
James English	Mary Helen Hawkins	Carson Kirkland	Susan McElroy
Betty Entekin	Christine Haynes	Jaclyn Kirkpatrick	Catherine McEwen
Nahializ Espinosa	Natalie Headrick	August Klein	Meisha McGee
James W. Eubank, Jr.	Billie Hembree	Christy Knight	Julie McGillivray
Laila Eutsey-McGhee	Bernice Henderson	Shannon Knight	Debra McGrady
Atif Fakhruddin	Diane Henderson	Chris Knox	Ally-Ann McKinney Woodard
Hala Fawal	Pam Hendley	Maria Kolettis	Anna Louise McKown
Tongia Feagins	Claire E. Hermes	Victoria Koogler	Claude McLain
Keith Jr Filles	Donald Hess	Jackie Kritner	Amy McNeese
Rusty Foster	Lanina Hicks	Stephanie LaBonte	Jory McNeil
Hannah Foust	Sherri Hill	Laurianna Lahtinen	Reuben Melton
Carl Franklin	Linda Hinchman	Stephanie Langford	Linda Mercier
Cortes Freeman	Sharon Hinz	Sherry Langley	Lynn Merrill
Julie Gabis	Rebecca Hodge	Marcus Lawrence	Charles Mickle
Patricia Gann	Ashley Hodges	Wes Lawson	Margaret Milford
Mary Frances Garner	Elizabeth Holcombe	Melody Le	Terrance Miller
Maud Garrick	Nora E. Holder	Hugh and Deanna Leader	Valerie Miller
Bettilew Gaskell	Carolyn C. Holt	Dennis LeBlanc	Mary Minyard
Jordan Gaston	Roger E. Hooper	David Lecompte	Wimberly Miree
Joseph Geddie	Blake Hopkins	Lisa Ledbetter	Lynn Mitchell
Gregg Geis	Rhesa Houston	Leigh H. Lehman	Louis Mizerany
Paula Gember	Anita Howard	Evelyn Leopard	Aaliyah Mizzell-Johnson
Dorris George	Michael Howell	Natalie Lett	Ellen E. Mobley
Joyce George	Karen E. Howze-Samuels	Sara Lett	Mark Moody
Robin Gerrish	Alan Hubbard	Alison Lindsay	Anslee Moore
Will Gilbert	Cassandra Hudson	Elizabeth Lindsey	Horace Moore
Dale Gilmore	Jacob Huffstutler	Frances Lindsey	Joel Moore
Robert P. Glaze	Joseph F. Hughes	Michael Liptrot	Jurnee Moore
Ed Gniadek	Ginger Hunt	Marcy Lischkoff	Susanne Moore
Ansley Goswin	Leigh Ann Hyche	Thad Long	Jennifer L. Morphey
Lynette Gough	Marianna Hyland	Erik Longoria	Brenda Murphy
Linda Grainger	Charlie Irrgang	Jim Lott	Margaret Murphy
Travis Grappo	Chervis Isom	Nancy Lowery	June G. Murray
Alissa Gray	Misty Jackman	Pauline Lowery	Charles Murrell

Donors

Donald Musgrave
Linda Nabors
Ann Nail
Yusra Narejo
Santiago J. Negre
Kerry Nevins
Curt Newell
Alex Newton
Hugh P. Nicholson
Jack D. Nix
Scherri Nix
Porschaly Nnadi
Debra Nobinger
Thomas Norman
Laura Northrop
Annetta Nunn
Jeff Nutter
Richard O'Neal
Asher Odom
Heather Odom
Peggy Ogilvie
Jennifer Oliver
Cecelia Oree
S Orelove
Juanita Owsley
Arthur Padawer
Amanda Paramore
Traci Paramore
Angela Parks
Kathy Parks
Rhone Parrish
Lenora W. Pate
Brandi Patterson
Destinee B. Patterson
Pamela Patton
Allan Paul
Daryl Payton
Wray Pearce
Larry Pearson
Jamiah Peavy
Jonathan Pender
Rebecca Peters
Stacy Peterson
Wendell Phillips
Gretchen Pickett
Heather Pike
William Pledger
James Pollard
W. T. Ponder
Beth Ann Pope
John W. Potts
Paul T. Prentiss
Richard Price
Willard Price
Leanne Price-Woosley

Bessie Pritchett
Eric Pruitt
Abigail Raczynski
Jamie Ragland
Lynn Raviv
April Rawson
Cori Ray
Wain Reed
Lorene Reeves
Susan Relfe
Dennie Rewis
Solomon Richardson
Tony Riddlehoover
Jack Roberson
Robert Roberson
David Roberts
Logan Robertson
Christina Robinson
Dewon Robinson
Josie Robinson
Kathy Robson
Stephen Rodde
Bobby Roden
David O. Rogers
Sharon Rogers
Dana Roscoe
Ann Rosier
Angela Rothrock
Jeanette C. Rousso
Barbara Royster
Betty Russell
Lisa Rutledge
Colleen Samples
Tripp Sanders
Katherine M. Saunders
Theresa Schilder
Joyce Scott
Max Scott
Lauren Shankman
LaSheaya Shannon
Susan Shaw
Dorothy B. Shiland
Rebecca Shirley
William E. Shirley
Jena Shourds
Anthony S. Shunnarah
Lindsey Sims
James P. Siragusa
John Skiba
Barbara Smith
Karen Smith
Lucynda P. Smith
Ralph Smith
Theresa Smith
Bruce Sokol

Gail Springer
Ashley Sprinkle
Robert S. Spurgeon
Anne Stafford
Logan Starks
Jane Perry Starling
Christine Steele
H. Ellsworth Steele
David Steinhauer
Tammy Stephens
Veronica Sterling
David Stojak
Jonathan Stout
Connie Stringfellow
Millie Studdard
Eugene Stutts
Janice Sullivan
Katie Sullivan
Erik Swenson
Gregory Tallent
Tsunenobu Tamura
Linda Taquino
Neima Tavakoli
Allen Taylor
Justin Taylor
Kingly Taylor
Lathan Taylor
Ruth Taylor
Nancy Tcherneshoff
Patricia Thienpont
James A. Thompson
Nita Thompson
Christie Thornbrough
Lorene Tidmore
Wayne & Lola Tittle
Peggy and Billy Todd
Barbara Traweek
Hanna Traweek
Harold Trigg
Jordan Truelove
Melita Truitt
Eloise Tuck
Julie Tucker
Tiffany Turner
Martha Vandergriff
Glenda Vansant
Rebecca Vansant
Lisa VanZandt
Trey Vaught
T. A. Vines
Hope Vinson
Albert Wade
Jasmine Wade
Carolyn Walker
Ronald Wall

Isabelle Ward
Janice Ward
Randal Ward
Henry Barret Ware
LaVone Warren
Mary Warren
Nigeria Watson
Susan Watterson
Venzine Wells
Amanda Wesley
Barry Wesson
Kailyn West
Mary West
Nancy Whaley
David Wheeler
Jennifer Whitaker
Arthur White
Mark Wilcoxon
Richard Wilcoxson
Tucker Wilkerson
Courtney Williams
Darlene Williams
Kelly Williams
Smith Williams
Patricia Williams
Aaron Wilson
Myra Wilson
Sarah Wilson
Joann S. Wissinger
Mary Wofford
Richard Wood
Christopher Woodall
C. Wright
Evelyn P. Wright
Jane Wright
Jasmine Wright
Thomas Wright
Robert Wylie
Carlene Yearwood
Alabama Homemakers and
Community Leaders
Alabama State Bar
Alagasco
Automotive Aftermarket
Association
Bank of America United Way
Campaign
Betsy Prince, Inc.
Bradford's Chapel United
Methodist Church
Carbon Hill High School
Circlewood Baptist Church Kit
Club
Dreamcakes Bakery
Elizabeth Stewart Group

Fairfield Emblem Club # 439
Franklin County Farmers
Federation
Gannett
Haleyville Elementary School
HCA Caring For The Community
Howell Graves Pre-School
Inroads, Birmingham Market
J.K. Group, Inc.
JC Penney
Life Realty, Inc.

Macy's Foundation
Main Street Productions
Mt. Zion Baptist Church
Muscle Shoals Area CFC
Owens Middle School/ Metal
Exchange
Papa Murphy's Take-n-Bake
Pizza
Penske
Pleasant Grove Extension
Homemakers

Razoo Foundation
Renaissance Charitable
Foundation Inc.
Revels and Son's Farms, LLC
Ronald McDonald House
Charities of Southern California
Saint Mark African Methodist
Episcopal Church
Shell Giving
Skipper Pools, LLC
Staples

Trinity United Methodist Church
UAB Athletics Department
Valhermosa Springs 1st Christian
Church
VOYA c/o Frontstream
Waffle House
West Blocton High School CCA
West Morgan Elementary School
Wilson & Berryhill, P.C.

In Kind Donors

Teresa Albert
Kevin Alexander
Ryan Alford
Henrietta Alums
Patti Aresty
Tonya Arrington
Bill and Gale Atkinson
Jessica Atkinson
Brenda Austin
Nadra Austin
James Avery
Kelsie Barrett
Emily Bates
John Beck
Thomas Belcher
Martha Benefield
Suzy Berman
Julie Berry
Jaycie Blackmon
Abbigale Blanton
Carson Michael Blanton
Paul Blutter
Tanner Bodiford
Bobby Boffa
Patricia Bogan
Connie Bramblett
Joanna Broyles
Carmen Bryans
Peyton Buczek
Heidi Budd
Britian Burnette
Mary Ann Burrows
Judy Bush
Jacalyn Butler
Stephanie Cain
Zoe Caldwell
Chandra Calhoun
Brad Callahan
Alexander L. Calo
Cale Campbell
Jay Carr

Viola Carr
Sarah Carter
Aaron Casteel
Marsha Castillo
Chaz Champion
Dewonderous Chandler
Helen & Her Church
Mary Ellen Clark
Ronald A. Clark
Cayden Colburn
Ashley Cole
Bill Cole
Latoya Collier
Shandon Collins
Michael Cooke
Melissa Cooper
Joy Coots
Teresa Creech
LaQuandra Croskey
Hayden Culp
Rita Cummings
Tiffany Curry
Nancy Dallas
Anita Dark
Clarence Davis
Jamie Davis
Jordan Davis
Michelle Davis
Ashley Dawson
Heather Dennis
Kim Dillashaw
Randall Doss
Vivian Drake
Stephanie Drew
Brenda Dubose
Bridgette DuBose
Albert Duff
Jasmine Duncan
Jeff & Adrian Dyer-Smith &
Family

Alabama Mary Liz Eaton
Jill Ellis
Sasha Epter
Billie T. Estes
Sandy Faust
Shemonica Files
Michael Fitts
LaRue Frederick
Sarah Freed
Anna Fritschi
Tyler Furgerson
Jack Galassini
Trina Gamiel
Karen Gandy
Kisha Garvin
Pat Geldzahler
Daphne Gibbs
Lee Gibson
Natalie Gilbert
Cathy Gilliland
Angie Gittles
Rusty Glasgow
Chris Glass
Jayna Goedecke
Sharmel Goodrum
Dorothy Goodwin
Joanne Grant
Jan Greer
Donna Griffith
Shomaira Gunn
Andria Hamilton
Dellanie Hamilton
Donnie Hann
Michelle Harmon
Shiann Harper
Easter Harris
Willie L. Harris
Allison Hayes
Debbie Henderson
Connie Hendon
Crystal Hendrix

Susan L. Hill
Gary Hodges
Teresa Holland
Roy D. Hollingsworth
Janet Holmes
John Hooper
Tammie Howard
Katherine Howe
Ms Hughes
Kristine Hutchens
Samantha Ingram
Iesha Jackson
Ed Jankowski
Ellen Clem Johnson
Nathaly & Katie Johnson
Ray Johnson
Tara Johnson
John Johnstone
Donna and Lorin Jones
Natasha Jones
Tara Jones
Kerrie Juliana
Hilary Justh
Ashley S. Kaple
Brooklyn Kendall
Cindy Lambert
Alice Lamont
Robert Langford
Elizabeth Lashley
Nik Layman
Ann Lee
Aimee Lesley
Hannah Machemal
Hanna Macheniehl
David Malone
Abigail Mansco
Jean Markham
Annette Marten
Delores Matthews
Susan McAllister
Blake McClellan

Donors

Bill McClurg
Erin McCown
Hannah McDonald
Clay McDougald
Mac McGee
Mary McGhee
Taylor McKnight
Josh & Sandy Meeks
Allen Meisler
Dee Merrill
Linda Miles
Charlene Mims
Deanna Minard
Faye Mitchell
Ethan Mobley
Etta Montgomery
Cedric Moore
Kenneth Moore
Bekah Morrison
Clifton Morton
Lisa Mosley
Connie Moss
Aidan (Twins) Mui
Kim Murphy
Clifton Nail
The Nelson Family
Randall Nichols
Cheyann Nix
Kaylee Nixon
John T. Norman
Gladys R. Oakes
Mabel Otamias
Caydence Pence
Andy Peters
Errol T. Pharris
Ruth Poe
Sydney Portis
John Powell
Rocky Prince
Debbie Pruitt
Adam Quarles
Morgan Rainey
Nettie Randolph
Mikaylah, Dawson and Phenix Ray
Evelyn Redmayne
Jennifer Reliford
Barbara Rengering
Charles F. Rhea
Christina and Katherine Roach
Kris Roach
Jeffery Robinson
Allene Rogers
Brittany Rowe
Julie Rowe

Stuart Royal
Martin Sanchez
Blake Sanders
Jessica Sanford
Timothy Sanford
Becky Satterfield
Pam Goss and Kelly Scott
Julianna Shoemaker
Tim Shoemaker
Christian Simmons
Alexis Sims
Bouncer Smith
Brylee Smith
Chelsea Smith
Jenny Smith
Katelyn Smith
Laurie E. Smith
Lynda Smith
Robertha Smith
Taylor Smith
William Smith
Marty Speare
Michael S. Sperando
Kylie Spicer-Lindsey
Connie Stein
Jason Stein
Jamie B. Stokes
Doug and Katy Storer
Ron and Karen Stucky and Family
Mary S. Sullivan
Norma Summers
Gloria Sutton
Mary Teed
Carolyn Thibodeaux
Lyda Marie Thompson
Shelley Tortorigi
Kristie & Scott Townsend
Paula Trammell
Emily Tubbs
Blake Tucker
Margie Turner
Tim Walker
Beverly Wallace
Travis Ward
Jurdy Warnock
Teresa Warren
Milton Washington
Cortlyn Watson
Lisa Watson
Kaitlyn & Jacob Weaver
Mary West
Jennifer Whitaker
Sydney Whiteside
Tucker Wilder

Caroline Williams
Ramona Williams
Brandace Wilson
Kim Wilson
Scott Wilson
Lesley Woodwirth
Gabriella Workman
Melissa Wren
Wendy Yates
4-H Club, Northwest Alabama
45th Street Baptist Church
7th Avenue Baptist Church
Abbeville Christian Academy
Absolute Enviromental & Jack's Resturant
Acmar United Methodist Church
ACTION Civitan
ADPi Alumnae
ADPi-UNA
ADPi-Alabama
ADPi-Montevallo
ADPi-Samford
African American Quilters Group
AL GWRRA Chapter T Hueytown
Alabama Cooperative Extension System - NW Reg. 4-H Council
Alabama Federation of Women's Clubs
Alabama Homemakers and Community Leaders
Alabama Media Group
Alabama Outdoors
Alabama Symphony Orchestra
Albertville Elementary School
ALC Photography
All Seasons Travel
Allstate
Alpha Delta Kappa - Fidelis
Alpha Chapter
Alpha Delta Pi
Alpha Kappa Alpha - Iota Phi Chapter
Alpha Kappa Alpha Sorority
Alpha Kappa Alpha-Talladega
Alpha Phi Alpha (Iota Nu-UAB)
Alpha Phi Alpha Fraternity/Iota Nu Chapter
Alpha Sigma Phi Fraternity
Altadena Valley Presbyterian Church- Youth
Altec Industries
Alys Stephens center
AME Church c/o Cordemia
Hendon
American Heart Association

Sweethearts
American Legion Auxiliary Unit 137
American Legion Auxiliary Unit No 15
American Legion Post #7
American Red Cross Chapter Services
American Sewing Guild - Birmingham Chapter
AMICO
Andrew's Chapel United Methodist Church
Animal Care Center
Antioch Missionary Baptist Church- Women's Intermediate Auxi
Arc of Blount County
Ashley Mac's
Astellas Pharma US, Inc.
AT&T
AT&T Pioneers/South Cahaba Council
AT&T Services
AU BON Pain- UAB Hospital
Auburn University c/o Community Relations
Autauga Academy
Aveda Experience Center
Babalu
Baker, Donelson, Bearman, Caldwell & Berkowitz
Bama Dining
BBVA Compass Bank
Bear Exploration Center
Berry Elementary School
Beta Sigma Ch- Chapter Omega Mastet
Beta Sigma Phi - Xi Sigma Chapter
Beta Sigma Phi Sorority- Xi Sigma Chapter
Beta Sigma Phi- Lauriate Chi Chapter
Bethel A.M.E. Church
Bethel Baptist Church
Birmingham Boys Choir
Birmingham City School Gifted Program
Birmingham Originals
Birmingham Police Department- Burglary Unit
Blessings From Jaxson
Blount County Career Technical Center

Blount Elementary School	Clayton United Methodist Church	Family Dollar	Girl Scout Troop 709
BLSA	CLP Corporation	Farris, Riley and Pitt Law Firm	Girl Scouts/Melinda Porter
Boot Camp Bible Study Group	Collins Bar	Fayetteville School	Girls Night Out
Bradford's Chapel United Methodist Church	Concord Elementary School	FBC Trussville- WMU	Glover, And Thessen Talley
Briarwood Christian High School	Conecuh Springs Christian School	Federation of Child Care Center	Glynwood Baptist Church
Briarwood Christian School	Corner High School - National Honor Society	First Baptist Church	Good Hope High School Leo Club
Brick and Tin LLC	Coterie Club	First Baptist Church of Cullman	Goodman Family
Bridgeworth Financial	Covenant Community Church	First Baptist Church of Pell City	Gray Taxidermy
Bromberg & Company, Inc.	Creeside Elementary School	First Baptist Church of Trussville	Greater Birmingham Young Republicans
Bryan Elementary School	Crestway Baptist Church	First Baptist Church of Wetumpka; Anchor Ministry	Greyhound Lines, Inc.
BSAC at UAB	Crossroads Baptist Church	First Christian Church - Christian Women's Fellowship	Greystone Elementary School
BUSA 04 Girls	Crossroads United Methodist Church	First Missionary Baptist Church - Women's Ministry	Guntersville Lake Homemakers
Butler Pride Heroines of Jericho C.A.H.A.B.A	Crossville Elementary School	First United Methodist Church - Demopolis	Guy Harvey Ocean Foundation
C.J. Donald School PTA	Crossville Middle School	First United Methodist Church of Trussville	Gymboree
Cahaba Heights Elementary	Cullman Moose Lodge #1861	Five Points Pub House & Oyster Bar	Hailey's Love Heaven Sent
Calcedonia Baptist Church	Cullman Primary Care	Fleet Pride	Hale County Middle School
Calera Elementary School	Cutie Patooties, LLC	Fleeta Jr. High 4-H	Hamilton Elementary School
Calera Middle School SGA	CW Trucking	Flow Dynamics and Automation, Inc.	Handley Middle School
Calvary Baptist Church	Dale County High School	Forest Lake Baptist	Harmony Baptist Church
Cantina	Dan's hands Education Foundation	Francesca's	Hayden High School
Carbon Hill High School	Daxco	Free Hill Baptist Church	Healthy Smiles Birmingham
Cards for Hospitalized Kids	Daxko, Inc.	Fridley Family	Heart & Soul Ministry
Care Fusion	Daylight Donuts/ Acton Road	Friendly Sister Chapter #27 of McCeaser Lodge	Helena CP Church- Ladies Group
Cargill	DBC Children's Church	Friendship Baptist Church	Helena Intermediate School
CarMax	Dean Restaurants	Fultondale Bakery	Helena United Methodist Church
CarMax Foundation	Deer Valley Elementary School	Gadsden & Rainbow Clinic	Highlands School
Carver High School	Deerfoot Baptist Church	Galleria Woods Retirement Home	Hokes Bluff Middle School
Central Juniors GFWC	Delta Sigma Pi	Gamestop	Student Council
Chalkville Elementary School	DG Restaurant	Garden City Church of God	Holly Pond School
Chambers County Schools	Dogwood Garden Club	Gardendale Elementary School	Holy Infant of Prague
Cheesecake Factory	Domino's Pizza	Gardendale First Baptist Church	Home Fix Consulting, LLC
Chelsea Church of Christ	Douglas High School	Geraldine Homemakers & Community Leaders	Hoover Church of Christ
Chelsea Park Elementary	Down Syndrome Alabama C.H.A.M.P.S.	GFNC Alabama Juniors	Hoover High School JV
Children of the Confederacy - Alabama Division	Dram Whisky Bar	GFWC Helena Juniors	Hoover Juniors
Children's Hospital of Alabama	Dry Valley Baptist Church	GFWC Huntsville Woman's Club	Hoover Rotary Club
Children's of Alabama Foundation	DuBose Family	GFWC Shades Mountain Woman's Club	Hope Christian School
Christ City Church	East Gardendale Baptist Church	Gintown Lowlife Society	Hope Christian School - Beta Club
Christ The King Lutheran Church	East Lawrence Middle School	Girl Scout Troop #203	Houston Co./Dothan Education Retirees aAssociation
Christine's	Eastwood Elementary School	Girl Scout Troop #218	Hueytown Elementary School
Church 29:11	Elkdale Baptist Church	Girl Scout Troop #766	Hueytown Middle School
Church at Brookhills, The	Emily's Heirloom Pound Cakes	Girl Scout Troop #9428	Student Council
Church of the Highlands	EPIC Elementary School	Girl Scout Troop 14	Hueytown Study Club
Chuy's	ESPA Extension Support	Girl Scout Troop 31017	Hunter Street Baptist Church
Cintas- Montgomery Distribution Center	Personnel Asso.	Girl Scout Troop 350	i Heart Media
Circle City Special Friends	Ex Voto Vintage		Iberia Bank
Exchange Club	Fairfield Emblem Club # 439		Ider High School
City of Birmingham/City Hall	Faith Apostolic Church		Impact Family Counseling
Clanton Middle School	Faith Church		Independent Presbyterian Church Foundation
	Faith Ministries, Inc.		Insomnia Cookies

Donors

IPC	Lil Soles	Navigate Affordable Housing	Priceville High School
Irondale Senior Center	Lily Rain	NCNW Of University Of	Pride of North Birmingham
Jack and Jill of America, Inc.	Limestone County Farmers	Alabama	#319
James A. Mulkey Elementary	Federation Women's Committee	New Harvest Church Of God	Prince of Peace Catholic Church
School	Lincoln Elementary School	New Life Art	Prince of Peace Catholic School
JCCEO Fairmonte Head Strat	Love Packages	New Market Homemakers Club	ProEquities
Center	Lupton Junior High	New Pilgrim Baptist Church	Protective Life Corporation
Jefferson Christian Academy	M. Elizabeth Events/ JAMM	New Salem Baptist Church	Protective Life Insurance
Jefferson County 4-H Club	Entertainment	New Zion Missionary Baptist	Company
Jefferson County Education	Madison Cross Roads	Church	Providence Christian School
Retirees Association	Elementary School	North Alabama Friends School	Rae of Hope, Inc.
Jefferson County Housing	Mafiozas Pizzeria	Northwest Alabama Conference	Railroad Park Foundation
Authority	Magic City Parrot Head Club	YPD	Raleigh Avenue Baptist Church
Jim 'N Nicks	Magic Moments	NW Regional 4-H Advisory	Realty South
Jones Walker LLP	Magic of Music, The	Council	Realty South - Mountain Brook
Joshen Paper & Packaging	Magic Steel Company	Oak Grove United Methodist	Red Mountain Theatre Company,
Junior Board	Martha Gaskins Elementary	Church	Inc.
Junior Imperial/ Imperialite Club	School- 1st Grade	OCR Mary Fielding Chaprt #15	Regions Bank - CMI Department
Just Paws	Mary Council of Crusaders	Octane Coffee	Regions Bank - Post Closing,
Kaitlin Hillman/UAB SOM Med-	Massey, Stotser & Nichols, P.C.	Odenville Elementary School	Products & Secondary Marketing
Peds	Max's Angels	Old Center UMC	Renasant Bank
Kappa Alpha Psi	Mayer Electric Supply Company	Olive Grove Congressional	Research Civitan Club
Kappa Chapter of Alpha Delta Pi	McAlister's Deli	Methodist Church	Retired Teachers Association
Kappa Tau Upsilon Fraternity,	McDonald's - 5th Avenue	Omni Studio	Riverchase Elementary School
Inc.	McGriff, Seibels & Williams, Inc	Once Upon a Time	Robert Trent Jones- Oxmoor
Kate Spade New York	McLeod Software	Optimist Club, The	Valley
Kayla Cares 4 Kids	McWane Science Center	Our Lady of Sorrows Catholic	Robins & Morton Group
Kendra Scott Design, Inc.	Med Jet Assist	Church	Rogue Tavern
KidsMeds Pharmacy	Medical Weight Loss	Our Lady of the Valley Catholic	Rotaract Club of Birmingham
Kinetic	Merchants Bank of Alabama	School	Royal International Miss
Kitty Stone Elementary	Metropolitan Community	Oxford High School	RPH Management, Inc.
Knight Eady Sports and	Church: Youth	Palisades Church of Christ	Saint Francis Xavier
Entertainment, LLC	Meyer Vacation Rentals	Panera Bread	Samford MWS Basketball
La Paz Crestline	Michael's Meanies	Paper Source	Samford Pharmacy
Labanon Baptist District Asso.	Michaels	Pathways For Development	Sarha Doctor Center
Lacys Spring Elementary School	Midway Baptist Church	Payne Chapel AME Church	Scarlet and Gold
Ladies Auxiliary VFW Post #485	Miss Regina's 1st Grade Class	Payne Primary School	Shades Valley High School
Lambda Kappa Mu; Acorn Club	Mobley Family, The	Pelham High School	Shades Valley Lutheran Church
Laurdale Co. RSVP	Moe's Southwestern Grill	People of God Community	Shady Grove/ Tim Sanford
Laureate Chi Prattville	MomenTaker Photography	Church	Sigma Alpha Lambda (UAB)
Leaf & Petal	Montevallo Elementary School	Peoples Bank of Alabama-	Sigma Alpha Lambda- UA
Lee Ann Hurst Jewelry	Moody Middle School	Cullman	Sigma Gamma Rho Sorority -
Leeds Elementary School	Morgan Stanley	Persnickety Pottery	Chi Sigma Chapter
Leeds High School	Mount Olive Elementary School	Petals With a Purpose	Silver Linings Outreach
Leesburg Church of Godof	Mountain Brook Creamery	Phi Theta Kappa	Sistahs In Service
Prophecy	Mountain Brook High School	Pine Grove Baptist Church	Sisters of Genesis #975, OES
Legacy Credit Union	Mountain High Outfitters	Pine Level Elementary/ My	Sixth Avenue Baptist Church/
Legal Marketing Association-	Mt. Hebron	House	Youth Ministry
Birmingham Chapter	Mt. Nebo Baptist Church	Pinson Valley High School	Skyland Boulevard Baptist
Lewis, Feldman, Lehane &	Mt. Pisgah Baptist Church	National Honor Society	Church
Snable, LLC	Mt. Sinai Missionary Baptist	Pisgah Baptist Church	Sol's Deli
Liberty Church of Christ	Church - Missionary Society	Pleasant Hill United Methodist	Soul Sisters
Lifetime Fitness	Mt. Zion Baptist Church	Church	South Highland Presbyterian
Lifting Up Dawson Parker & FBC	Mtn. Gap P- 8 School	Prattville Primary School	Church
Friends	Nail Envy	Premier Bank of Addison	Southern Company Alabama

Power Company
Southern Family
Southminster Day School
Southwest Airlines
Spain Park High School
Spring Gardens Senior Center/
Apartments
Spring Hill Baptist Church
St James United Methodist
Church
St, John #57
St. Clair County Sheriff's Office
St. Clair Recycling c/o Antoinette
MacMurdo
St. Elmo Elementary School
St. John's United Methodist
Church
St. Joseph Baptist Church
St. Paul AME Church
Stanley Steamer
State Farm Insurance
Stemley Road Elementary
Stephens Family, The
Studio 2412
Sulphur Springs Baptist Church /

Blair Watson
Sumiton Elementary School
Sumiton Middle School
Super Seven
Surgery Center of Cullman
Sweethearts
T.R. Middle School
Target
Taziki's
Team Up For St. Jude
Ted's Restaurant
Thirty-One Gives
Thompson Middle School
Ticket Biscuit
Titusville Civitan Club
TJ Max - Inverness
Townsend Honda
Trinity NICU
Trinity United Methodist Church
True Friends #627
Tuscaloosa County Farmers
Federation - Women's Committee
Tuscaloosa Education Retires
Association (TERA)
Two Men and a Truck

UAB Anatomical Pathology
UAB Athletics Department
UAB Benevolent Fund
UAB Occupational Therapy
UAB School of Dentistry
UAB School of Nursing
UAB Softball Team
UAB Spirit Teams
UAB Women & Friends
Union Chapel United Methodist
Church
United Johnson Brothers
United Way of Central Alabama
University Honors Program
University of Alabama Student
Alumni Association
UPS - United Parcel Service
Urban Standard
US Space and Rocket Center
Valley Jr. High School
Valley View Baptist Church
Vera Bradley at the Summit
Vestavia Hills Elementary School
West
VFW 4190

Victory Christian School
Vincent Elementary School
VITAS Health Care
Vulcan Park and Museum
W. A. Threadgill Primary School
Waffle House
Wayfarer's Girl Scout Leaders
WBRC - Fox 6
Wenonah High School
West Morgan High School
West Point Intermediate School
Westwood Baptist Church
Whole Foods
Wills Valley Elementary School
Wilsonville Elementary School
Wiregrass Medical Center
Xi Eta
Xi Beta Beta Chapter of Beta
Sigma Phi
Zerubbabel No. 3 Holy Royal
Arch Masons
Zeta Gamma Rho
Zeta Phi Beta Sorority, Inc.
Zoe's Kitchen

Although every attempt is made to accurately report all of our donors, errors can occur. We apologize for any misspellings or omissions. Please contact Lisa VanZandt at (205) 638-7263 or lisa.vanzandt@rmhca.org with corrections.



11th Annual Red Shoe Run

January 10th, 2015 | Rosewood Hall @ SoHo Square



Despite the below freezing temperatures, 2015's Red Shoe Run went off without a hitch! With **932** registered participants, runners bundled up for the 10 mile, 5K, or 1 mile race and ran across the finish line. After the race, participants enjoyed post-race food from McDonald's, post-race massages in the VIP tent, a kids bouncy house, games, and music with Britton Lynn of Fox 6 as our emcee. Awards for overall winners and age group winners in the 10 mile and 5K races, as well as, awards for our fundraising winners were given. It was a great morning and the event netted **\$44,342!**

Sponsors

Geocent

Iberia Bank

McDonald's Birmingham Co-op

Fox 6

Medical Properties Trust

Barker Advertising

Nucor

SS Nesbitt

MidSouth Baking

Alabama Media Group

Maynard Cooper & Gale PC



Ronald McDonald House Classic 14th Annual Golf Tournament

May 12th, 2015 | Robert Trent Jones - Oxmoor Valley

We had **169** golfers turn out at the 14th Annual Classic. Golfers received an RMHCA golf bag, a new pair of Nike golf shoes, a bluetooth wireless speaker, and other RMHCA swag to start off their day. They purchased mulligans, McValue Packs, Poker Cards, and raffle tickets before the shotgun time of 9:00 am sent them on their way for a fun day on the greens. After they finished their round of 18 holes in scramble format, all golfers returned to the clubhouse to enjoy lunch, redeem their raffle tickets, and the winners collected their awards at the day's ending awards ceremony. It was a wonderful, sunny day full of raising money for RMHCA! 2015's golf tournament netted over **\$70,670!**



Ronald McDonald House Classic Committee

Jason Black, Chair; Mary Ellen Clark, Rick Hanna Jr., Andy Peters, Bob Sargent, Rick Roth, Jeff Sweatt, Frederic Smith

Sponsors

Hudson Company

Rick and Linda Walter
Dr Pepper, Loomis
Martin-Brower
PNC Bank
Coca-Cola
WIAT 42
ACIPCO
Baker Donelson

McDonald's Birmingham Co-op
United Johnson-Brothers of Alabama

Barker Advertising
BB&T
Bradley Arant
Fairway Investments
Fravert Services
Haynes-Downard
Keystone Foods
Kimerling Family Foundation
Maynard Cooper & Gale PC

Altec

McDonald's- Guntersville
Medical Properties Trust
MidSouth Baking
Regions Bank
Renasant Bank
SS Nesbitt
Vulcan Materials
Wells Fargo

13th Annual Heart of the House Gala

August 7th, 2015 | Sheraton Birmingham



With a brand new date, the addition of Mobile Bidding, a new venue downtown at the Sheraton, and entertainment to end the night, 2015's Heart of the House Gala proved to be one of the best! Over **320** guests enjoyed cocktails while bidding on items in the silent auction through their mobile devices as well as participating in our auction games. Dinner was served at 7 pm and guests enjoyed a wonderful dinner while learning more about the Ronald McDonald House and how one family, the Davis' have been impacted by the services offered here. With the help of our emcee, Calvin 'Speedy' Wilburn from the Rick & Bubba Show, our auctioneer Christie King got the guests fired up and bidding like crazy on our wonderful live auction packages. After guests pledged their special appeals, guests were invited to stick around for entertainment and dance the night away. Our 13th Heart of the House Gala was a huge success, netting over **\$149,155!**

Ronald McDonald House Gala Committee

Bob and Jill Crawford, Co-Chairs; Kathy Emison, Jayna Goedecke, Cindy Hodo, Tammie Howard, Connie Stein

Sponsors

McDonald's Birmingham Co-op

UAB Medical Center

Protective Life Corporation

Children's of Alabama
Medical Properties Trust

ACIPCO

HealthSouth

BBVA Compass Bank

Barker Advertising

Bradly Arant Boulton Cummings, LLP

Brasfield & Gorrie

CMC Steel Alabama

Dr. Carl Coghill and Dr. Waldemar

Carlo MD

Dr Pepper

EBSCO Industries Inc.

Honda Manufacturing of Alabama

Brother's Recycling

United Johnson Brothers of Alabama

Maynard Cooper & Gale PC

Mid South Baking Company

Regions Bank

Renasant Bank

Ste Michelle Wine Estates

USI Insurance

Vulcan Materials Company



Keeping
families close

Ronald McDonald House Charities® of Alabama
www.RMHCA.org
1700 4th Avenue South Birmingham, AL 35203